

PR2000 *Precision Profiler*[™]

SAMPLE DATA REPORT

SolveTech^{INC}

PO Box 9245 Wilmington, Delaware USA 302-798-5400 www.gauging.com

**SolveTech Precision Profiler
Model PR2000B**

The PR2000B (shown below) was used to collect data shown in this report.

An 042 head was used with a standard configuration.



The customer sent in three samples for evaluation:

- Sample A
- Sample B
- Sample C

A NIST Traceable calibration was performed for each sample. To do this, we first did density tests which are shown on the following page.

The results are presented on the following pages. We were able to achieve highly repeatable results and measured with a precision down to +/- 0.001 mils. The graph of sample C shows two runs on sample C overlaid to demonstrate repeatability.

Based on these test results we can see that there were some variability trends observed.

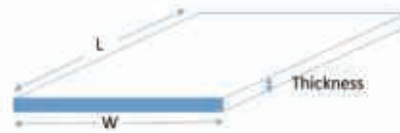
-Rob Lawrence

SolveTech, Inc.

For product information, or to discuss the results of these tests, please call SolveTech at 302-798-5400 or email: info@gauging.com

**SolveTech Precision Profiler
Model PR2000B**

Gauge By Weight Method



- $(\text{Length} \times \text{Width} \times \text{Thickness}) \times \text{Density} = \text{Weight}$
- $\text{Average Thickness} = \text{Weight} / (\text{Length} \times \text{Width} \times \text{Density})$

Results from testing for NIST Traceable calibration. The average readings from the profiler are set to match the calculated average thickness of the film.

Sample A :

Density: 0.970 g/cm³
Length: 35.0"
Width: 3.40"
Weight: 2.639 g
Calculated Average Thickness: 1.395 mils

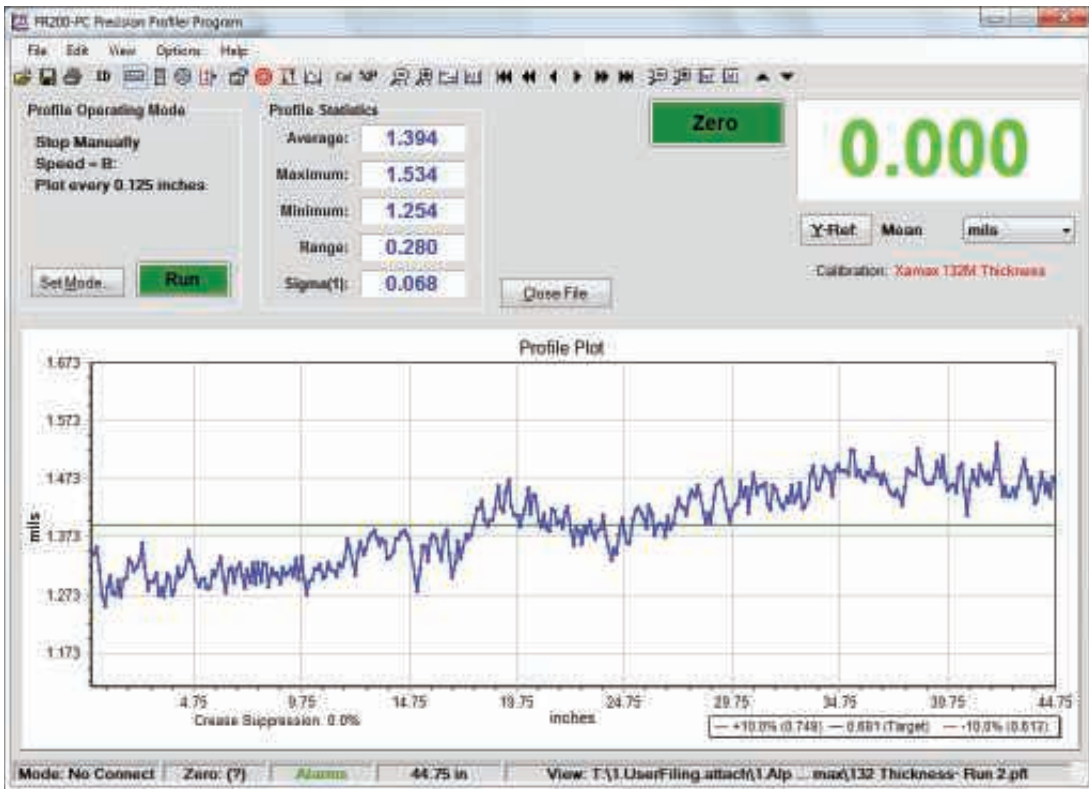
Sample B

Density: 0.956 g/cm³
Length: 35.0"
Width: 3.40"
Weight: 2.639 g
Calculated Average Thickness: 1.395 mils

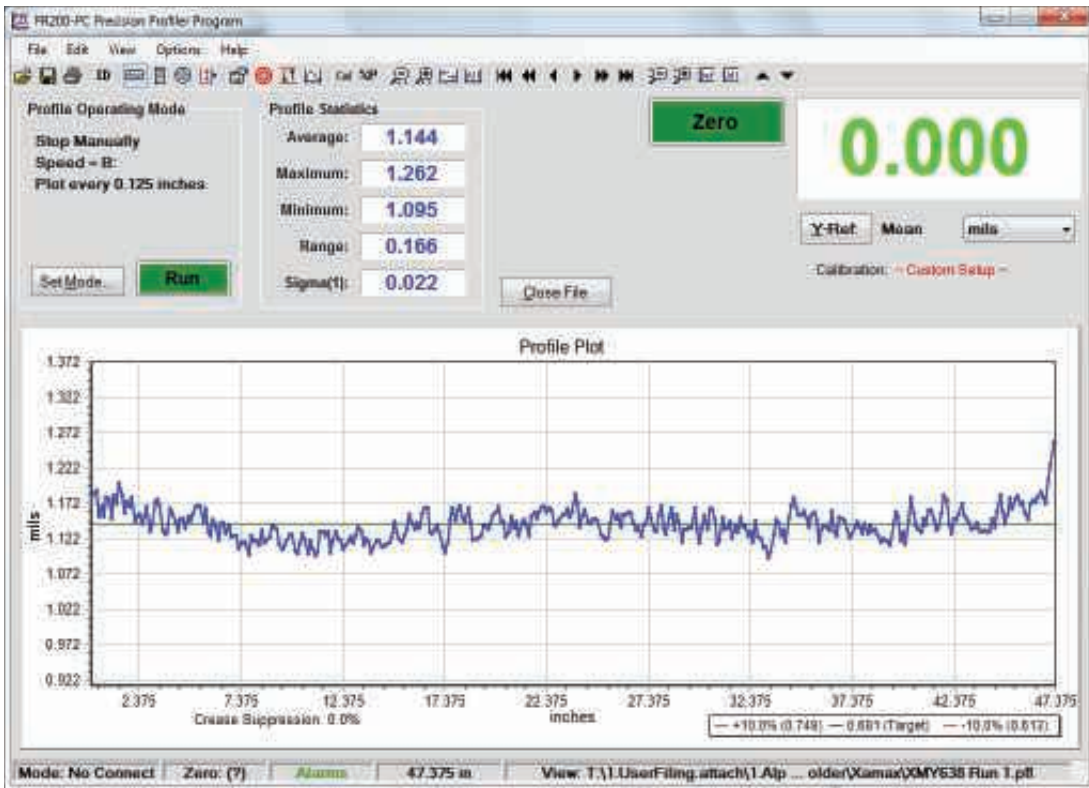
Sample C

Density: 0.956 g/cm³
Length: 60.0"
Width: 3.40"
Weight: 11.262 g
Calculated Average Thickness: 3.524 mils

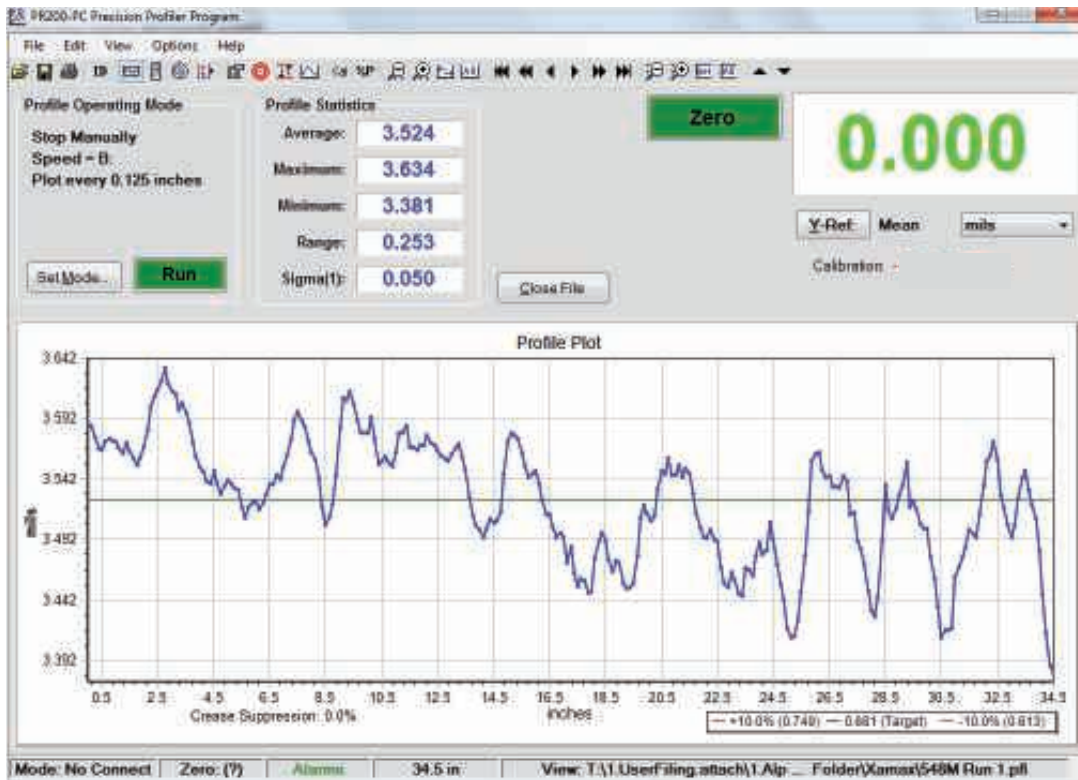
SAMPLE A



SAMPLE B



SAMPLE C - RUN 1



SAMPLE C - RUN 1 (BLUE) AND RUN 2 (RED) To Show Repeatability

